

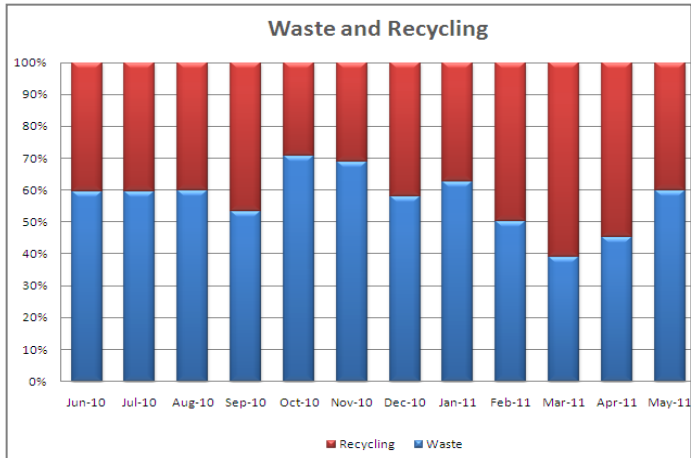
**Dear Colleague**

Cititec is delighted to provide you with an update of our environmental initiatives.

**Waste and Recycling**

Total waste sent to landfill between June 2010 – May 2011 was 1,029 bags (a monthly average of 86 bags) compared with 1,235 bags (monthly average of 103 bags) between June 2009 – May 2010.

Moreover, Cititec’s recycling efforts continue to be a success whereby recycling has increased from 31% in 2010 to 43% this year. This is largely thanks to greater company awareness.

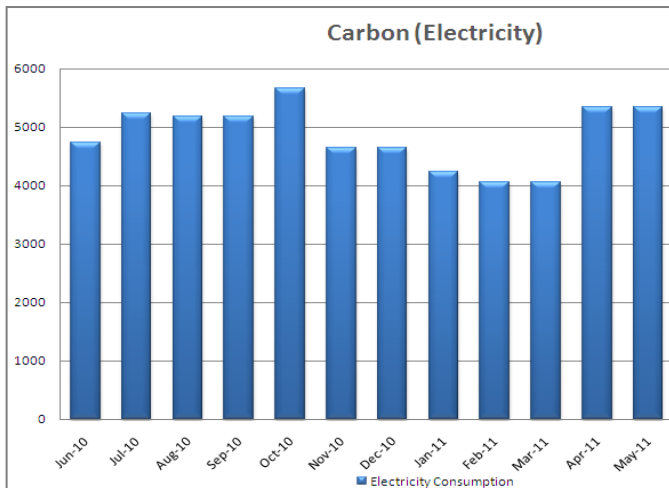


**Electricity**

Electricity consumption has been at an all time high (9,053 kwh per month), almost double from the previous year (4,668 kwh per month). Such hike has been attributed to the following:-

- Cititec now occupies all three offices
- Office renovations have been taking place throughout the year
- Increased resources from 43 in May 2010 to 72 in May 2011
- Electrical equipments such as fans, air cons & PCs are left on overnight and during weekends.

To assist in reducing consumption, we kindly remind all employees to continue to turn off their PCs, fans and Air Cons when leaving the office.

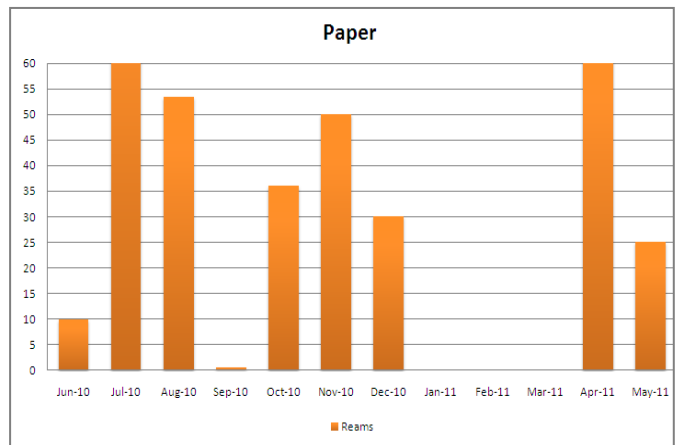


**Paper**

After years of trying to reduce paper usage, we have finally seen a significant improvement in this area. The average monthly purchase of paper has substantially decreased by 31%. To date, Cititec is using an average of 7,000 sheets of paper less per month than the previous year.

This is largely due to the introduction of Echosign and Leave Planner.

To sustain this, please continue to print your document on double sided paper and re-use printed paper as scrap where possible.



**Company Awareness**

Further training session will shortly be provided to Cititec staff to ensure everyone is up to date with the company’s Environmental Management System.

Thank you for all your efforts to date and keep up the fantastic work!

Environmental Management Team